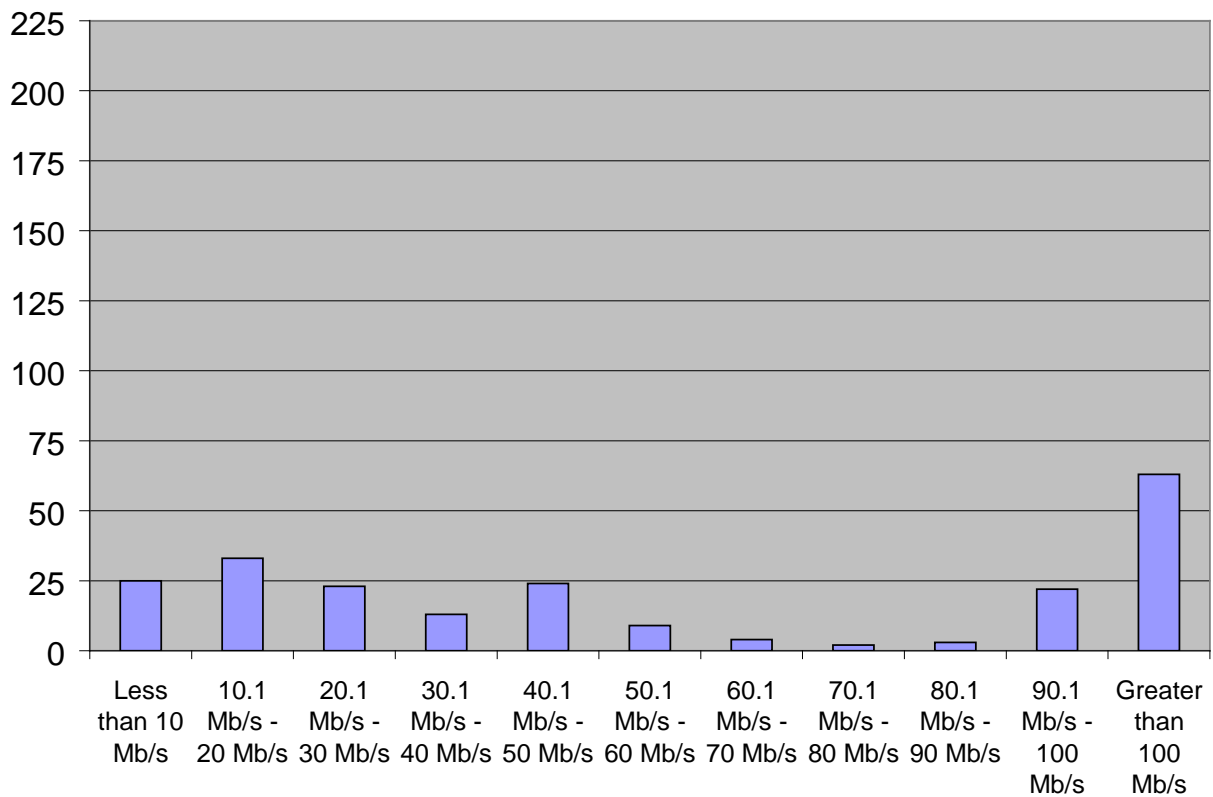


30. What is the total size (in megabits per second) of your institution's connection to the Internet? Please do not include connections to Internet2, Lambda Rail, or similar networks unless they provide your institution with direct, non-research associated connectivity to the Internet and are primarily used in that capacity.

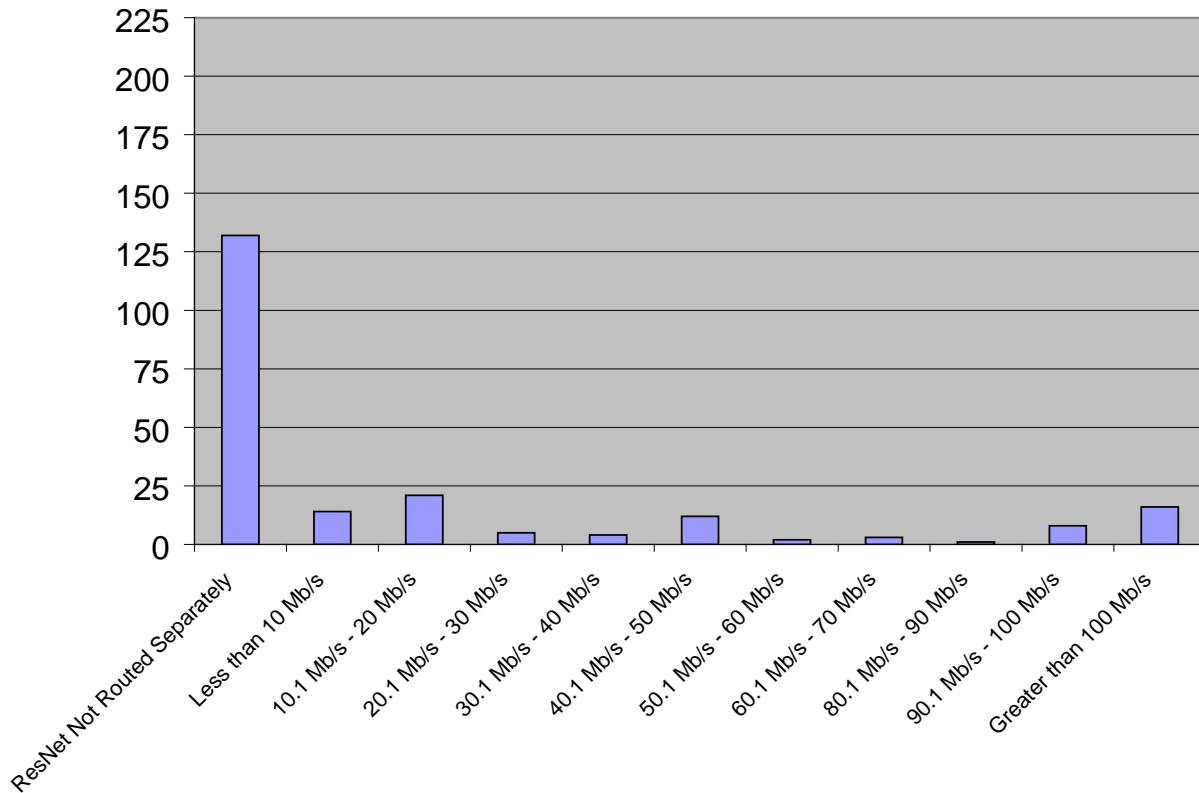
- less than 10 Mb/s
- 10.1 Mb/s - 20 Mb/s
- 20.1 Mb/s - 30 Mb/s
- 30.1 Mb/s - 40 Mb/s
- 40.1 Mb/s - 50 Mb/s
- 50.1 Mb/s - 60 Mb/s
- 60.1 Mb/s - 70 Mb/s
- 70.1 Mb/s - 80 Mb/s
- 80.1 Mb/s - 90 Mb/s
- 90.1 Mb/s - 100 Mb/s
- greater than 100 Mb/s



	Frequency	Percent
Less than 10 Mb/s	25	11%
10.1 Mb/s - 20 Mb/s	33	15%
20.1 Mb/s - 30 Mb/s	23	10%
30.1 Mb/s - 40 Mb/s	13	6%
40.1 Mb/s - 50 Mb/s	24	11%
50.1 Mb/s - 60 Mb/s	9	4%
60.1 Mb/s - 70 Mb/s	4	2%
70.1 Mb/s - 80 Mb/s	2	1%
80.1 Mb/s - 90 Mb/s	3	1%
90.1 Mb/s - 100 Mb/s	22	10%
Greater than 100 Mb/s	63	28%
No answer	3	1%

31. If your residential computer network's Internet connection is routed separately from the rest of your institution's network, what is the total size (in megabits per second) of your institution's residential network connection to the Internet? Please do not include connections to Internet2, Lambda Rail, or similar networks unless they provide your residential network with direct connectivity to the Internet and are primarily used in that capacity.

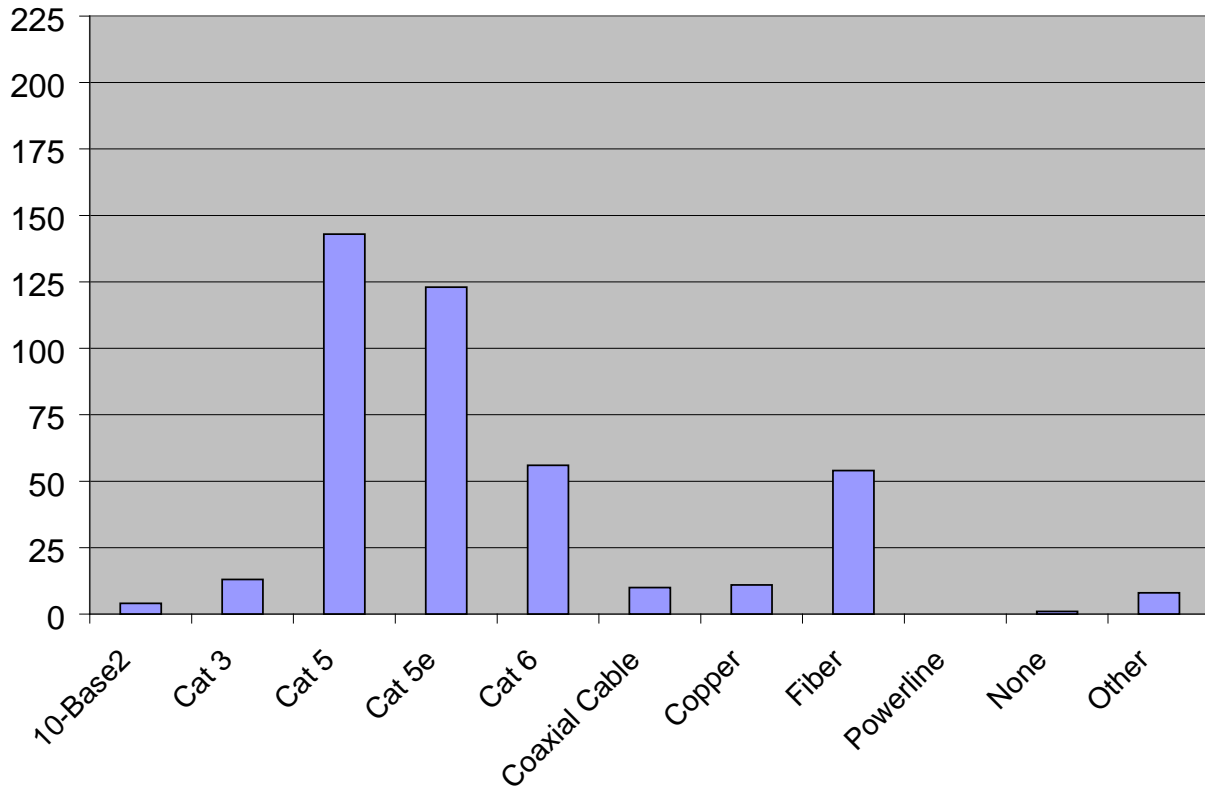
- Our residential network Internet traffic is not routed separately from the institution network
- less than 10 Mb/s
- 10.1 Mb/s - 20 Mb/s
- 20.1 Mb/s - 30 Mb/s
- 30.1 Mb/s - 40 Mb/s
- 40.1 Mb/s - 50 Mb/s
- 50.1 Mb/s - 60 Mb/s
- 60.1 Mb/s - 70 Mb/s
- 70.1 Mb/s - 80 Mb/s
- 80.1 Mb/s - 90 Mb/s
- 90.1 Mb/s - 100 Mb/s
- greater than 100 Mb/s



	Frequency	Percent
ResNet Not Routed Separately	132	59%
Less than 10 Mb/s	14	6%
10.1 Mb/s - 20 Mb/s	21	9%
20.1 Mb/s - 30 Mb/s	5	2%
30.1 Mb/s - 40 Mb/s	4	2%
40.1 Mb/s - 50 Mb/s	12	5%
50.1 Mb/s - 60 Mb/s	2	1%
60.1 Mb/s - 70 Mb/s	3	1%
80.1 Mb/s - 90 Mb/s	1	< 1%
90.1 Mb/s - 100 Mb/s	8	4%
Greater than 100 Mb/s	16	7%
No answer	6	3%

**32. What wired media is available and used for data transmission in the residential spaces?
 (Check all that apply)**

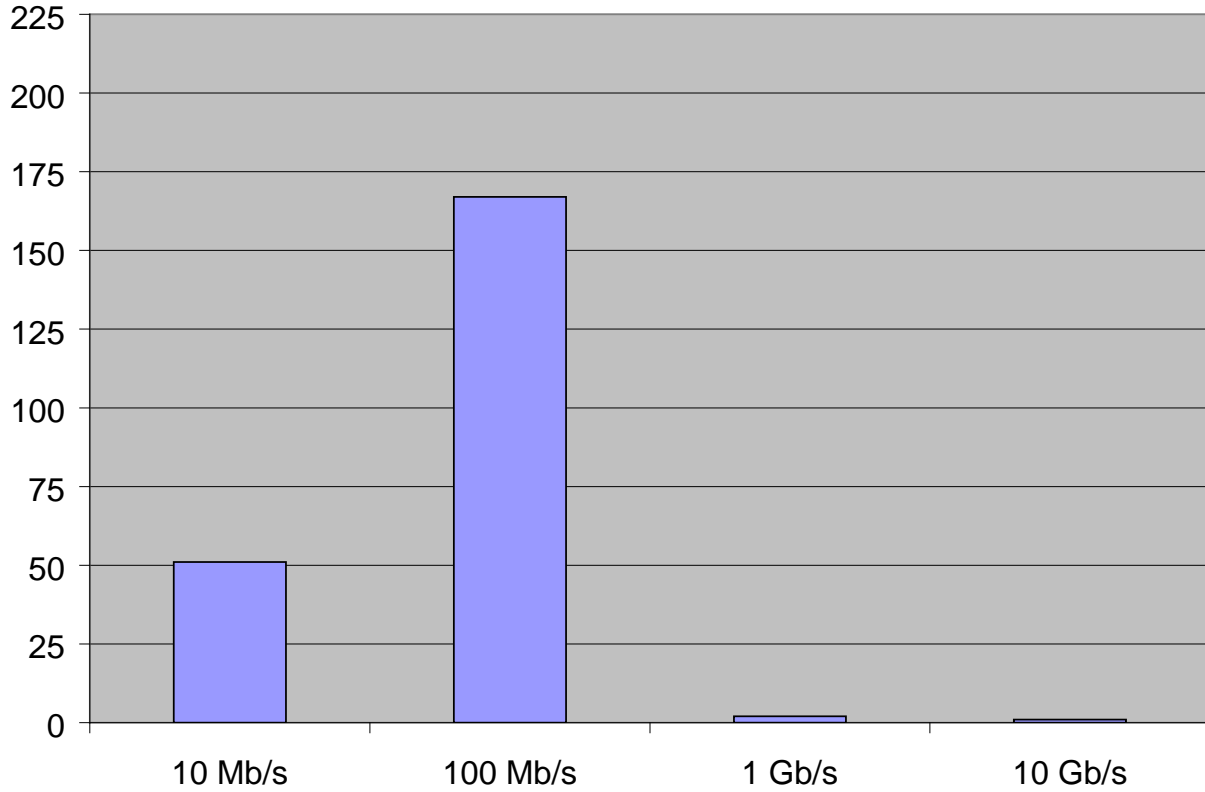
- 10-Base2 (thinnet)
- Category 3 UTP
- Category 5 UTP
- Category 5e UTP
- Category 6 UTP
- Coaxial cable (i.e. cable modem)
- Copper (i.e. DSL)
- Fiber
- Powerline
- None (100% wireless environment, excluding wiring to the access points)
- Other (please specify)



	Count	Proportion
10-Base2	4	2%
Cat 3	13	6%
Cat 5	143	64%
Cat 5e	123	55%
Cat 6	56	25%
Coaxial Cable (i.e. cable modem)	10	4%
Copper (i.e. DSL)	11	5%
Fiber	54	24%
Powerline	0	0%
None	1	< 1%
Other	8	4%

33. What is the fastest in-room connection speed on your residential computer network?

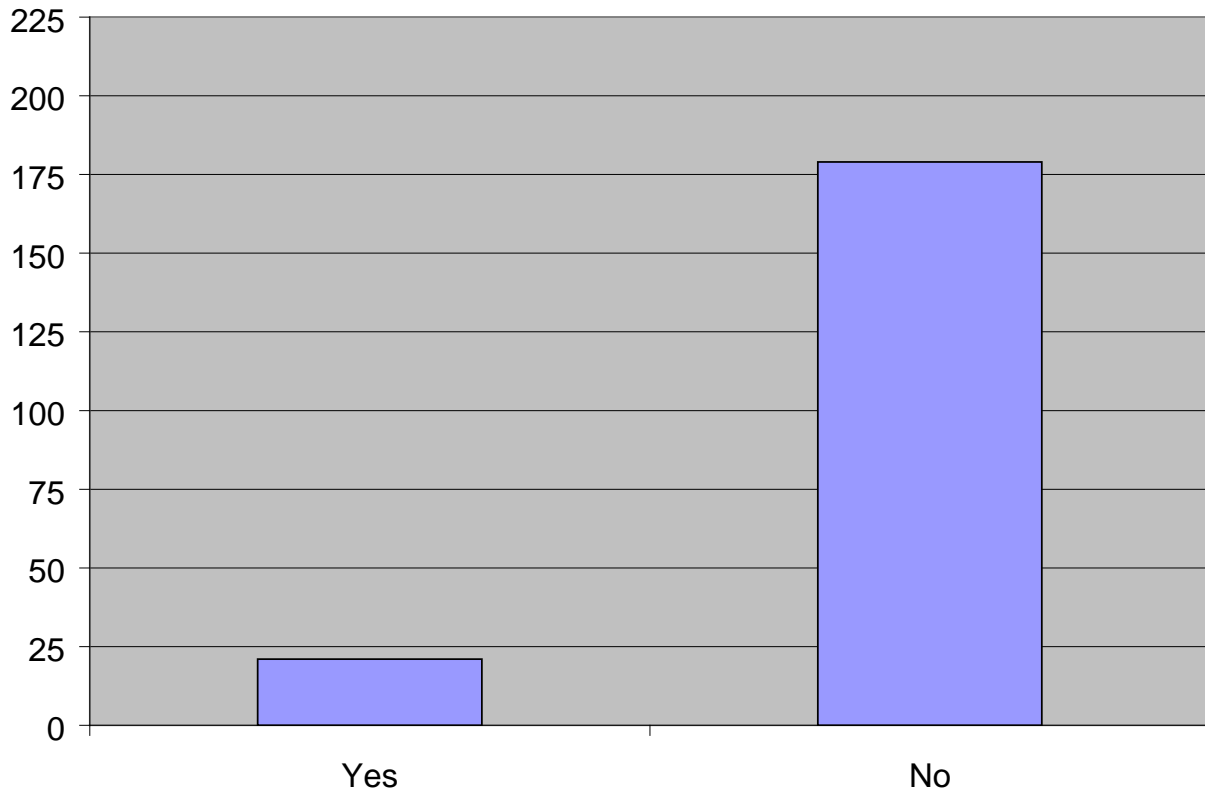
- 10 Mb/s
- 100 Mb/s
- 1 Gb/s
- 10 Gb/s
- Other (please specify)



	Frequency	Percent
10 Mb/s	51	23%
100 Mb/s	167	75%
1 Gb/s	2	1%
10 Gb/s	1	< 1%
Not Sure	1	< 1%
No answer	2	1%

34. Do you have plans to increase the in-room connection speed beyond the amount stated in the previous question within the next year?

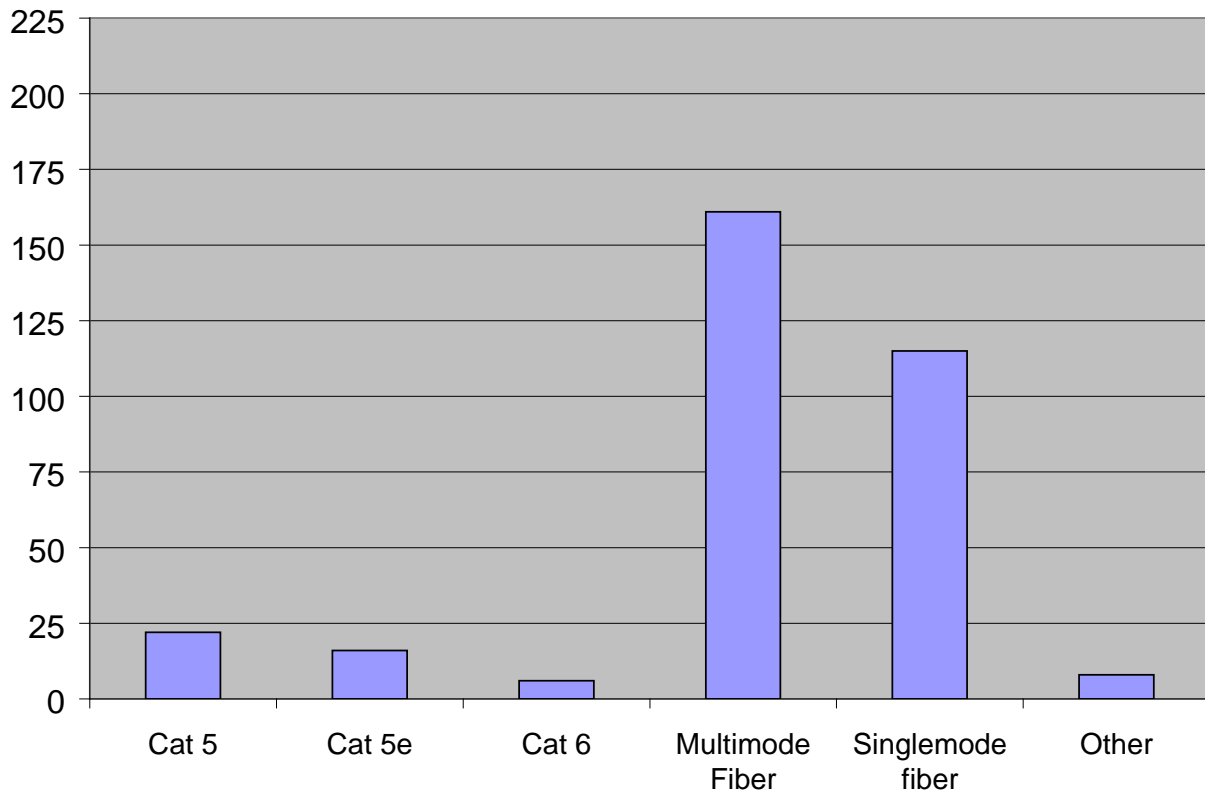
- Yes
- No
- Not sure



	Frequency	Percent
Yes	21	9%
No	179	80%
Not Sure	22	10%
No Answer	2	1%

35. What media are used to interconnect your residential spaces (interbuilding)? (Check all that apply)

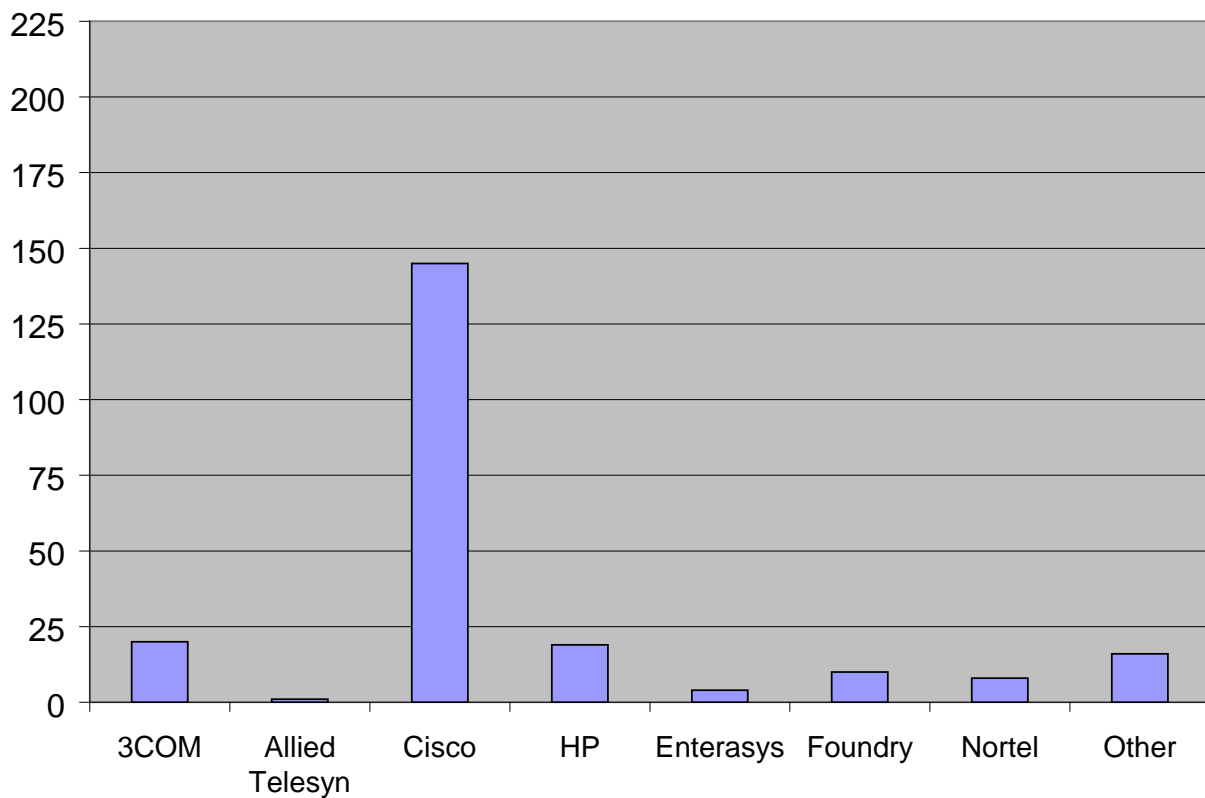
- Cat 5 UTP
- Cat 5e UTP
- Cat 6 UTP
- Multimode fiber
- Single mode fiber
- Other (please specify)



	Count	Proportion
Cat 5	22	10%
Cat 5e	16	7%
Cat 6	6	3%
Multimode Fiber	161	74%
Singlemode fiber	115	53%
Other	8	4%
No answer	7	3%

36. Which vendor's networking equipment is predominantly installed in your residential computer network?

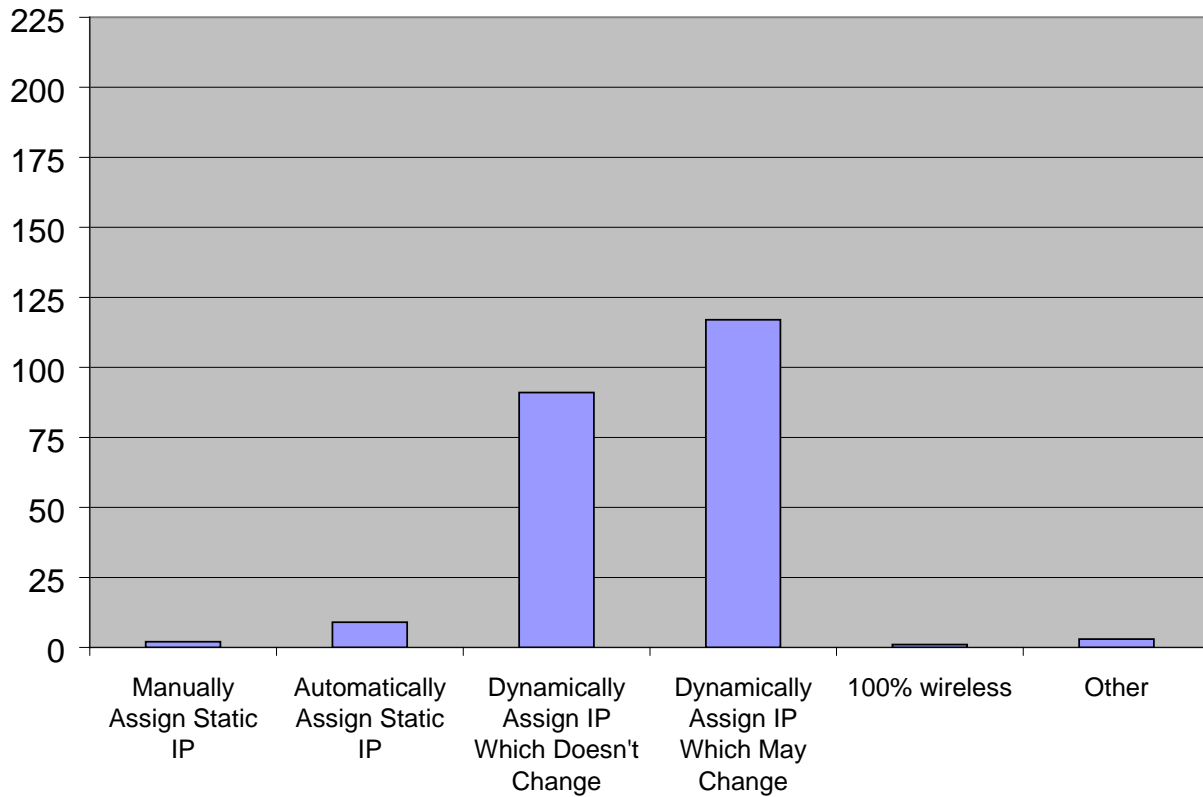
- 3COM
- Allied Telesyn
- Cisco
- Enterasys
- Foundry
- HP
- Nortel
- Other (please specify)



	Frequency	Percent
3COM	20	9%
Allied Telesyn	1	< 1%
Cisco	145	65%
HP	19	9%
Enterasys	4	2%
Foundry	10	5%
Nortel	8	4%
Other	16	7%
No Answer	1	< 1%

37. Do residents receive a static IP address or a dynamic IP address on the wired segment(s) of your residential computer network?

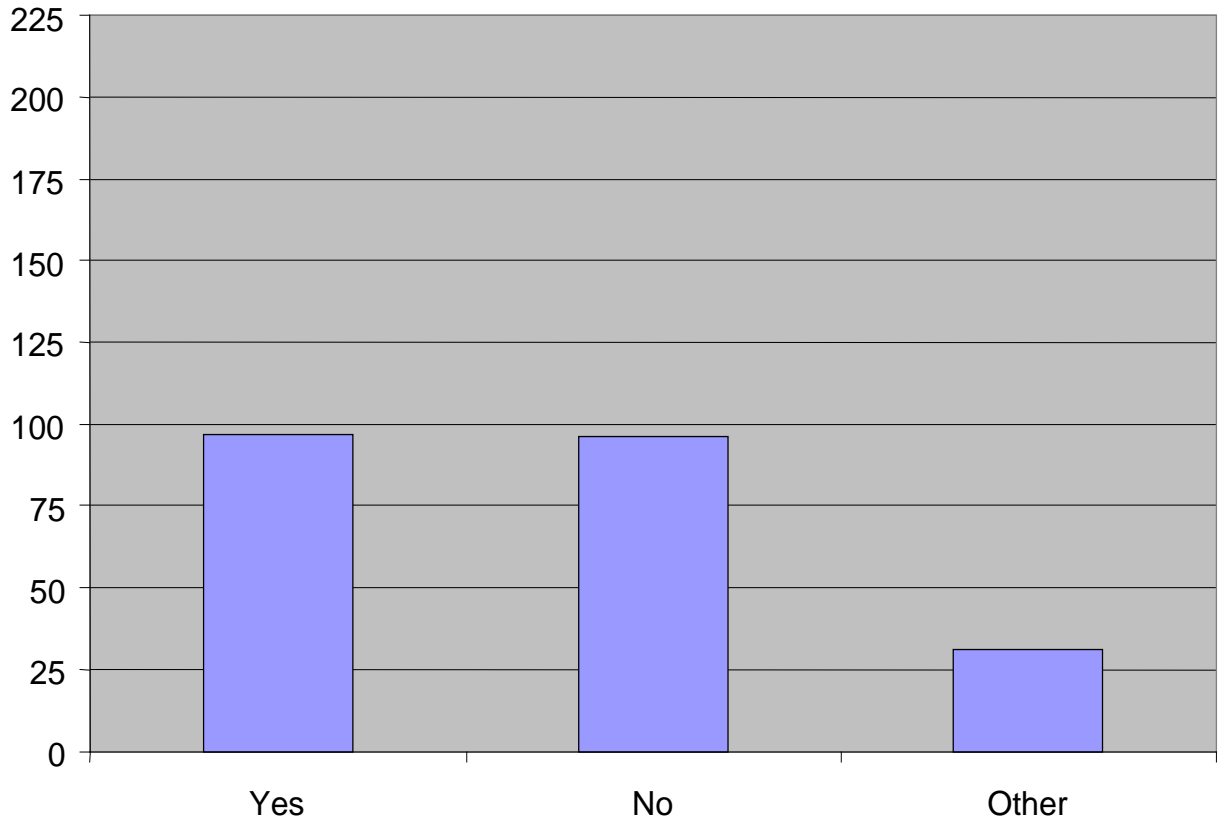
- Residents are manually assigned a static IP address
- Residents are automatically assigned a static IP address
- Residents are provided a dynamic IP address through DHCP that does not change
- Residents may receive a different IP address through DHCP each time they connect
- Our residential computer network is 100% wireless
- Other (please specify)



	Frequency	Percent
Manually Assign Static IP	2	1%
Automatically Assign Static IP	9	4%
Dynamically Assign IP Which Doesn't Change	91	41%
Dynamically Assign IP Which May Change	117	52%
100% wireless	1	< 1%
Other	3	1%
No answer	1	< 1%

38. Are residents permitted to install hubs or switches in their rooms?

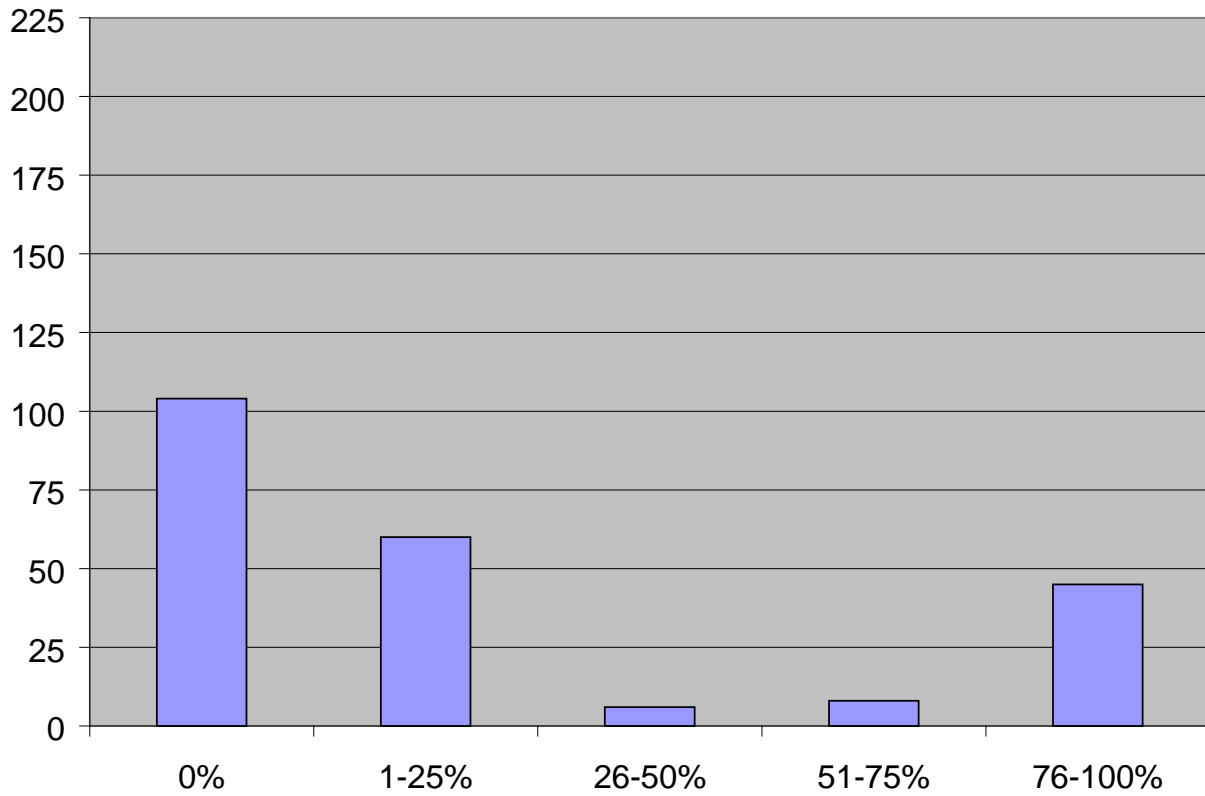
- Yes
- No
- Other (please specify)



	Frequency	Percent
Yes	97	43%
No	96	43%
Other	31	14%

39. What percentage of your residential buildings presently has institutionally-provided and -supported wireless network access (i.e. at least one Access Point or coverage from adjacent Access Point) available?

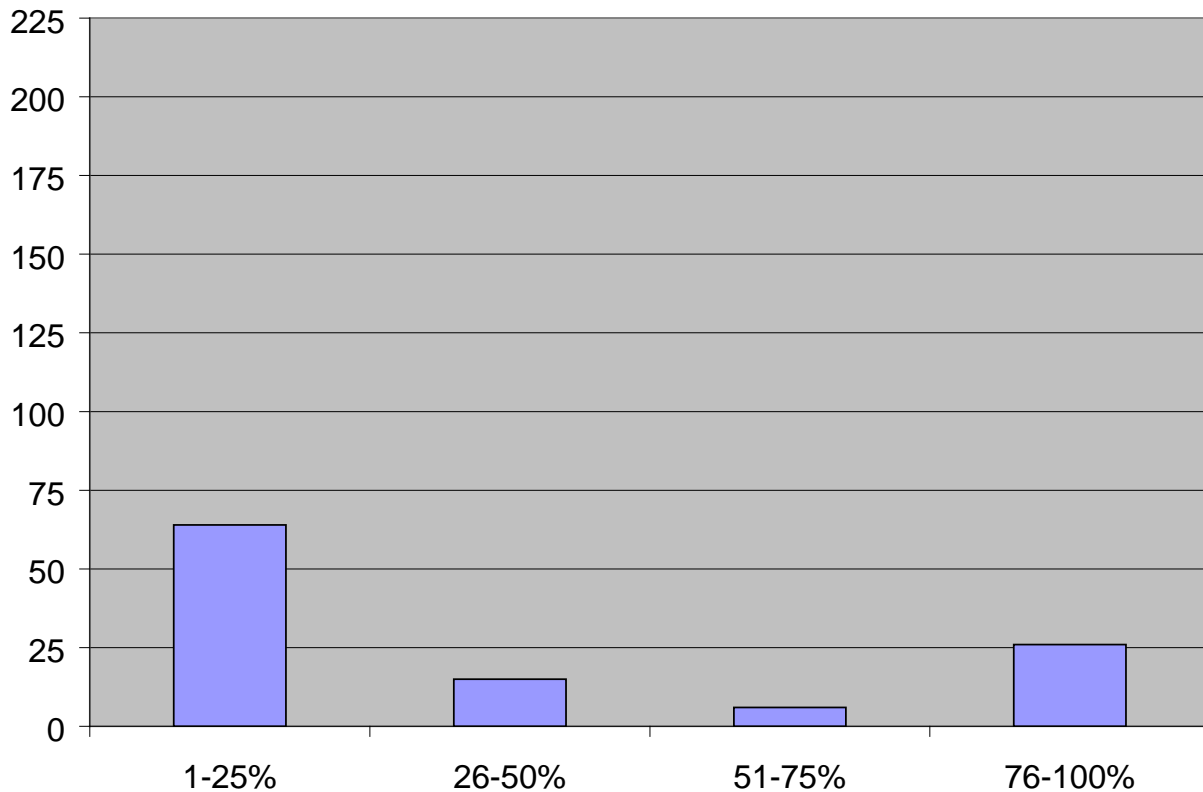
- 0%
- 1-25%
- 26-50%
- 51-75%
- 76-100%
- Not sure



	Frequency	Percent
0%	104	46%
1-25%	60	27%
26-50%	6	3%
51-75%	8	4%
76-100%	45	20%
Not Sure	1	< 1%

40. Within those residential buildings which presently have institutionally-provided and -supported wireless network access (as noted above, i.e. at least one Access Point or coverage from adjacent Access Point), how much of each building, on average, has wireless access?

- 0%
- 1-25%
- 26-50%
- 51-75%
- 76-100%
- Not sure

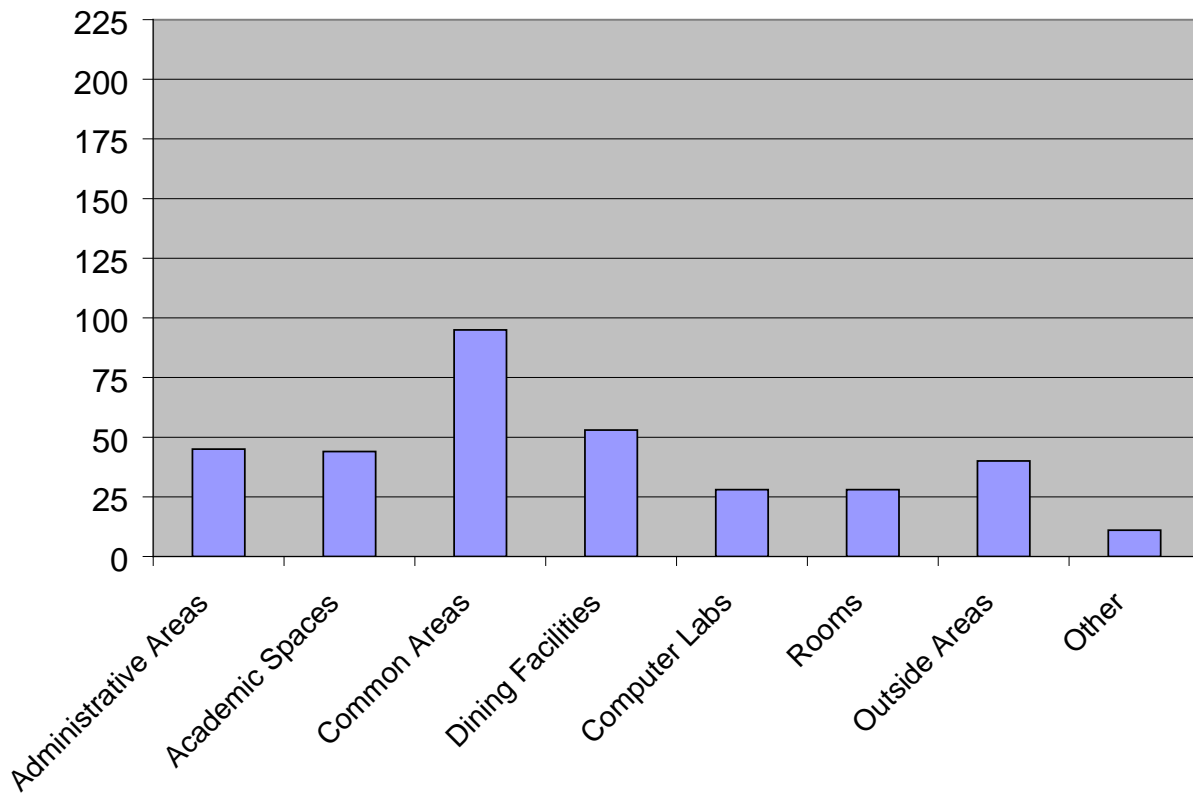


	Frequency	Percent
0%	0	0%
1-25%	64	53%
26-50%	15	13%
51-75%	6	5%
76-100%	26	22%
Not Sure	8	7%
No Answer	1	1%

104 respondents did not answer question 40 as they indicated in a previous question (39) that they do not offer wireless access in any residential buildings.

41. In what areas of your residential spaces do you intentionally have wireless access connectivity? (Check all that apply)

- Administrative areas (Front desks, area offices, residential staff offices, etc.)
- Academic spaces in residences, including classrooms and study areas
- Common areas and community spaces
- Dining facilities
- Residential computer labs
- Residential rooms, suites, or apartments
- Outside areas adjacent to residential spaces (courtyards, parks, breezeways, etc.)
- Other (please specify)

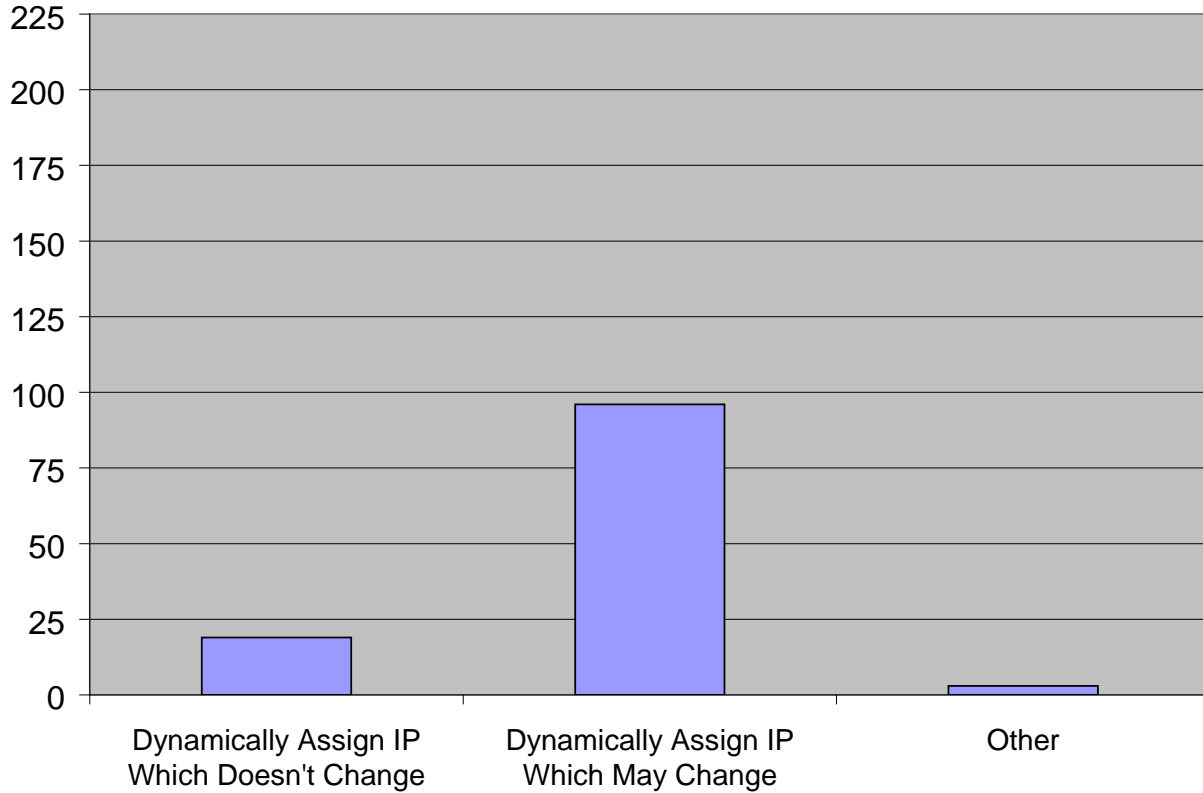


	Count	Proportion
Administrative Areas	45	38%
Academic Spaces	44	37%
Common Areas	95	81%
Dining Facilities	53	45%
Computer Labs	28	24%
Rooms	28	24%
Outside Areas	40	34%
Other	11	9%
No answer	2	< 1%

104 respondents did not answer question 41 as they indicated in a previous question (39) that they do not offer wireless access in any residential buildings.

42. Do residents receive a static IP address or a dynamic IP address on the wireless segment(s) of your residential computer network?

- Residents are manually or automatically assigned a static IP address
- Residents are provided a dynamic IP address through DHCP that does not change
- Residents may receive a different IP address through DHCP each time they connect
- Other (please specify)

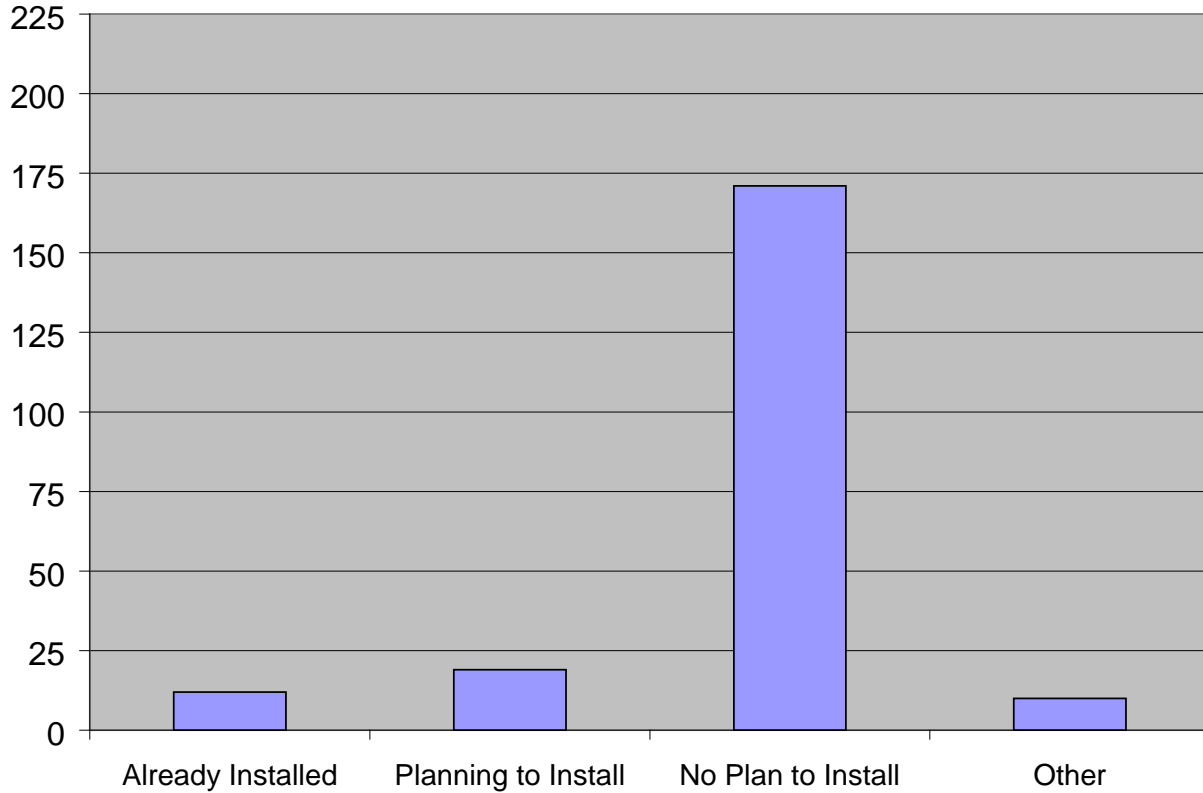


	Frequency	Percent
Dynamically Assign IP Which Doesn't Change	19	16%
Dynamically Assign IP Which May Change	96	80%
Other	3	3%
No Answer	2	2%

104 respondents did not answer question 42 as they indicated in a previous question (39) that they do not offer wireless access in any residential buildings.

43. Does your institution plan to use "cell technology" to enhance wireless data coverage in large, outdoor areas?

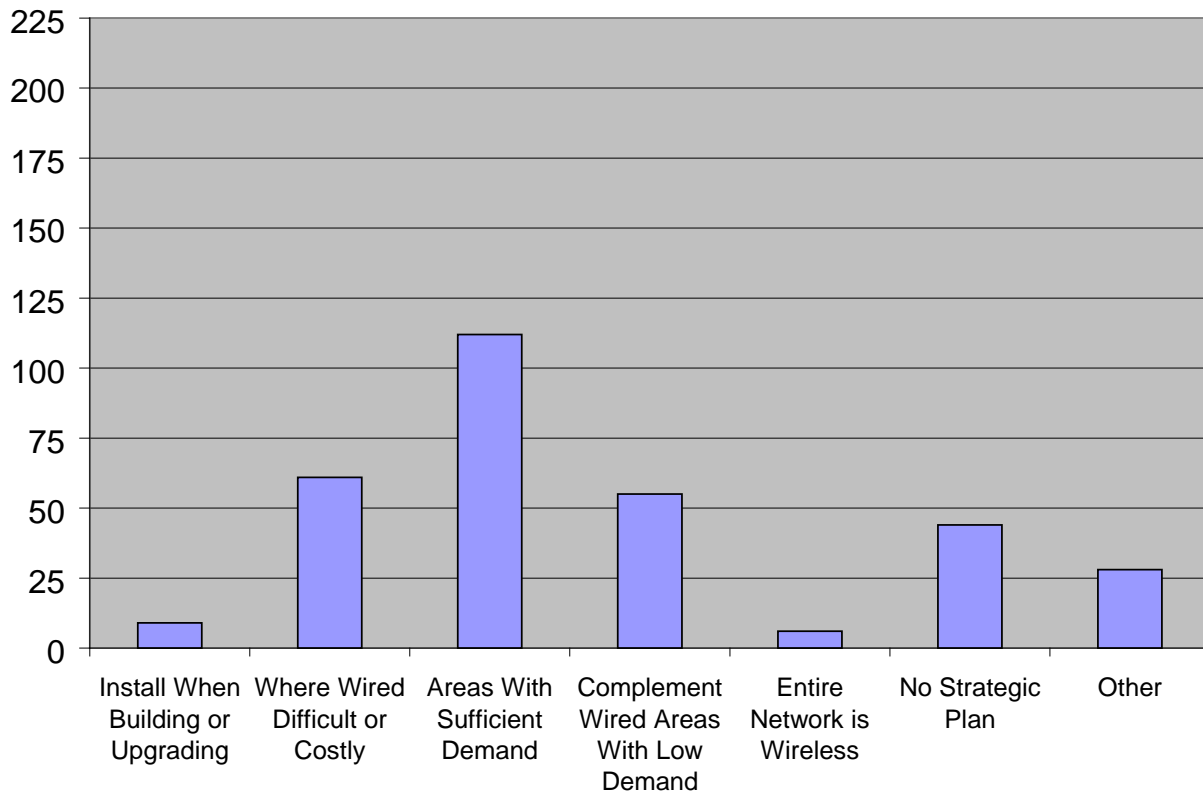
- Our institution has already installed it
- We are in the planning process to install
- We have no plans to install it at this time
- Other (please specify)



	Frequency	Percent
Already Installed	12	5%
Planning to Install	19	9%
No Plan to Install	171	76%
Other	10	5%
Don't Know	6	3%
No Answer	6	3%

44. What is the strategic plan for integrating wireless with wired technology within your institution's residential spaces? (Check all that apply)

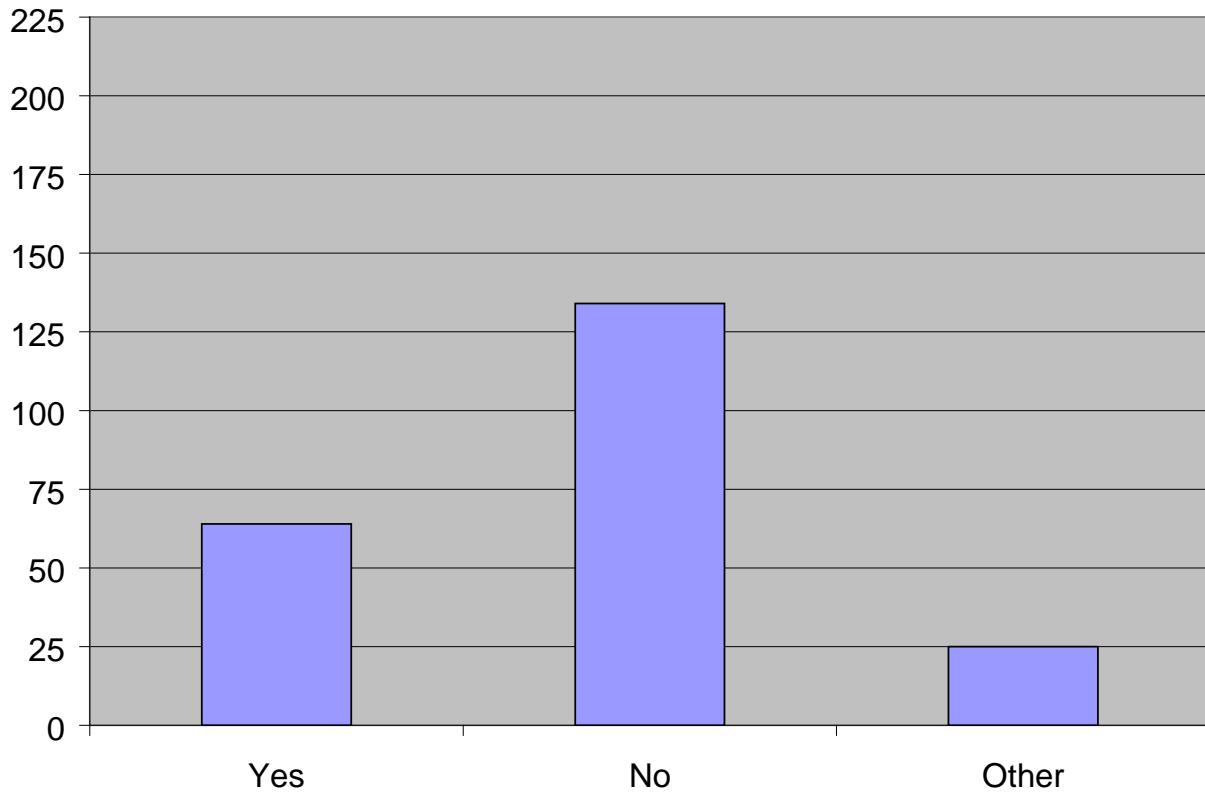
- As we upgrade or build new facilities, we are only installing wireless
- Wireless technology is used to augment where wired installations are difficult or costly to install
- Wireless technology is placed in strategic areas where demand is sufficient
- Wireless is installed as a complement to wired access in areas of low demand for bandwidth
- We have no strategic plan for wireless access as our entire residential computer network is wireless
- We have no strategic plan for wireless access
- Other (please specify)



	Count	Proportion
Install When Building or Upgrading	9	4%
Where Wired Difficult or Costly to install	61	28%
Areas With Sufficient Demand	112	51%
Complement Wired Areas With Low Demand	55	25%
Entire Network is Wireless	6	3%
No Strategic Plan	44	20%
Other	28	13%

45. Are residents permitted to install wireless access points in their rooms?

- Yes
- No
- Other (please specify)



	Frequency	Percent
Yes	64	29%
No	134	60%
Other	25	11%
No Answer	1	< 1%